



RIVERSIDE  
RESOURCES INC

KNOWLEDGE IS GOLDEN

CORPORATE PRESENTATION

June 2020

## Forward-Looking Statements

This document contains forward-looking statements and factual information that are current as of the date the document was originally created. Riverside Resources Inc. ("the Company") disclaims any intention or obligation to update or revise any forward-looking statements, whether as a result of new information, future events or otherwise. Forward-looking statements include, but are not limited to, statements with respect to the timing and amount of estimated future exploration, success of exploration activities, expenditures, permitting, and requirements for additional capital and access to data.

Forward looking statements involve known and unknown risks, uncertainties, and other factors which may cause the actual results, performance or achievements of the Company to be materially different from any future results, performance or achievements expressed or implied by the forward looking statements. Such factors include, among others, risks related to actual results of current exploration activities; changes in project parameters as plans continue to be refined; the ability to enter into joint ventures or to acquire or dispose of properties; future prices of mineral resources; accidents, labor disputes and other risks of the mining industry; ability to obtain financing; and delays in obtaining governmental approvals of financing

Any statements, opinions, projections, forecasts or other material contained in this presentation do not constitute a commitment, representation or warranty by the company or its directors, officers, agents or employees. The directors, officers, agents and employees of the company shall in no way be liable to any person or body for any loss, claim, demand, damages, costs or expenses of whatsoever nature arising in any way out of, or in connection with, the information contained in this presentation. This presentation does not constitute an offer to sell securities and is not a solicitation of an offer to buy securities. It is not to be distributed to third parties without the consent of the company. An investment in the company is considered to be speculative in nature. Each individual should rely solely upon its own investigations and inquiries with respect to the company and agrees it will not in any way rely upon this presentation. The company recommends that you consult your own professional advisor(s).

## Qualified Person

The scientific and technical data contained in this presentation relating Riverside's mineral properties was reviewed by Freeman Smith, P.Geo., a non-independent qualified person to Riverside Resources, who acts as a "qualified person" under National Instrument 43-101 Standards of Disclosure for Mineral Projects.



# Investment Highlights

- Highly experienced & focused exploration team
- 75,000 Location Database (\$20M+ in past investment)
- +\$2M in cash and +\$1.5M in other junior resource equities
- ~63M shares outstanding
- New partnerships in 2020
  - Progressing Exploration Funding Agreement with BHP (focus on copper discoveries in Sonora, Mx)
- Canadian Project Acquisitions
- Mexico Project Transactions
- Gold-Silver resource project Spin-Out approved



Riverside Geologists in Sonora, Mexico



# Experienced and Balanced Management Team

## Management

- John-Mark Staude, *President & CEO*
- Alberto Orozco, *VP Corporate Development*
- Freeman Smith, *VP Exploration*
- Pedro Herrera, *Country Manager (Mexico)*
- Robert Scott, *CFO*

## Board of Directors & Advisors

- John-Mark Staude, *Director*
- Brian Groves, *Director*
- Carol Ellis, *Director*
- James Clare, *Director*
- Walter Henry, *Director*
- Ron Burk, *Advisor*
- Joness Lang, *Advisor*



Riverside in the Field with Directors

For full bios please visit Riverside's website at [www.rivres.com](http://www.rivres.com)

# Highly Experienced Technical Team

## John-Mark Staude, President & CEO

Mr. Staude earned a Masters of Science from Harvard University in 1989 and a Ph.D. in economic geology from the University of Arizona in 1995.

## Alberto Orozco, VP Corporate Development

Mr. Orozco has 15 years of mining experience working with Linear Gold Corp., Pediment Gold and more recently, Argonaut Gold

## Freeman Smith, VP Exploration

Mr. Smith has 19 years of professional experience in the resource industry working with Oro Gold, BCGold Corp and Goldplay Explorations.

## Pedro Herrera, Country Manager (Mexico)

Mr. Herrera holds his MSc. and has more than 20 years of exploration experience throughout Mexico.

## Ron Burk, Advisor

Mr. Burk has 30 years of work experience in the minerals industry and contributed in the discovery of the Pitarrilla Project in Durango, Mexico.

## Companies our technical team has worked with



YAMANAGOLD

RioTinto Kennecott

teckcominco



SILVER  
STANDARD

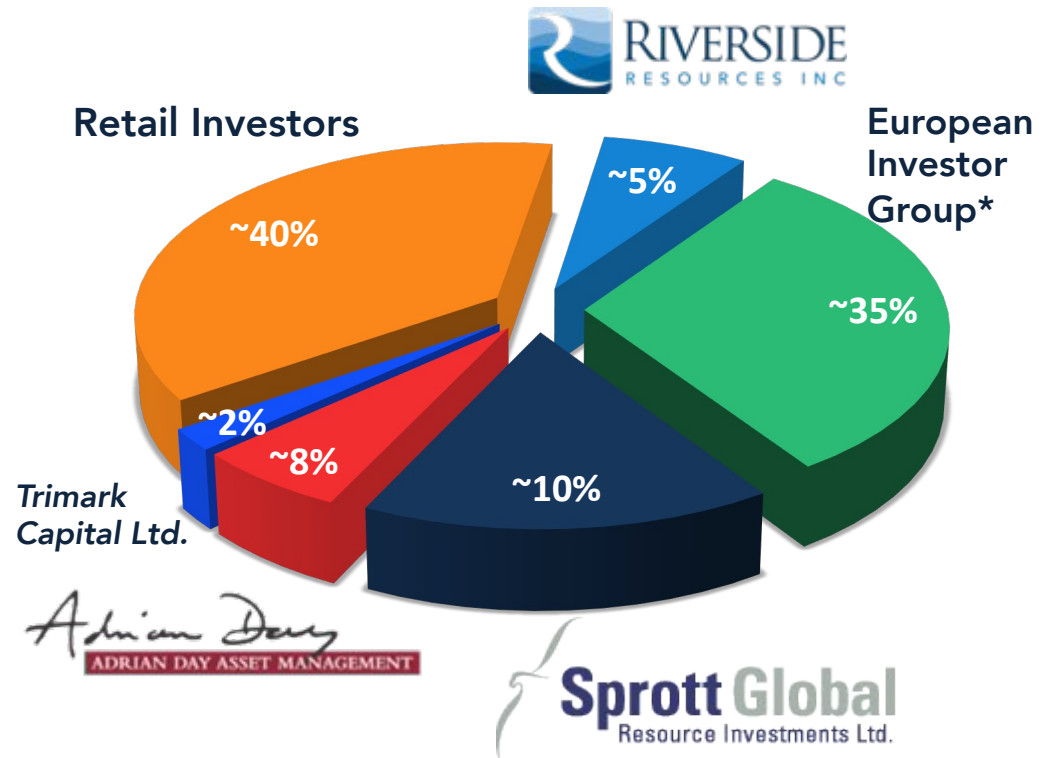


RIVERSIDE  
RESOURCES INC

# Share Structure and Key Shareholders

Issued (since IPO in 2007)	63,241,188
Options	4,387,500
Warrants (0.22)	17,516,875
Fully Diluted	85,145,563
Cash	+\$2,000,000
52 Week Hi-Lo	\$0.25 - \$0.10
Market Cap	~C\$12M

Major Shareholders own ~60% of outstanding shares



\*European Investor Group consists of high net worth investors and small resource funds

\*These amounts are estimated to the best of our knowledge as of June 1, 2020

# Riverside's Equity Portfolio

## Shares Held by Riverside

2M Shares\*  Arizona Metals Corp.

1M Shares\*  SILVER VIPER  
MINERALS

~15M Shares\*\* Other Private/Non-Public Companies

\*+\$1,500,000 CAD deemed value as of June 1, 2020

\*\*Shares held in illiquid private companies/shells



# Partner Funded Exploration



# Partners



For every \$1 Riverside spends on exploration the Company has generated ~\$2 in partner-funded exploration.

\*since inception



# Past Strategic Partnerships

## Major companies Riverside has had Strategic Alliances with

---



ANTOFAGASTA  
MINERALS



**CLIFFS**



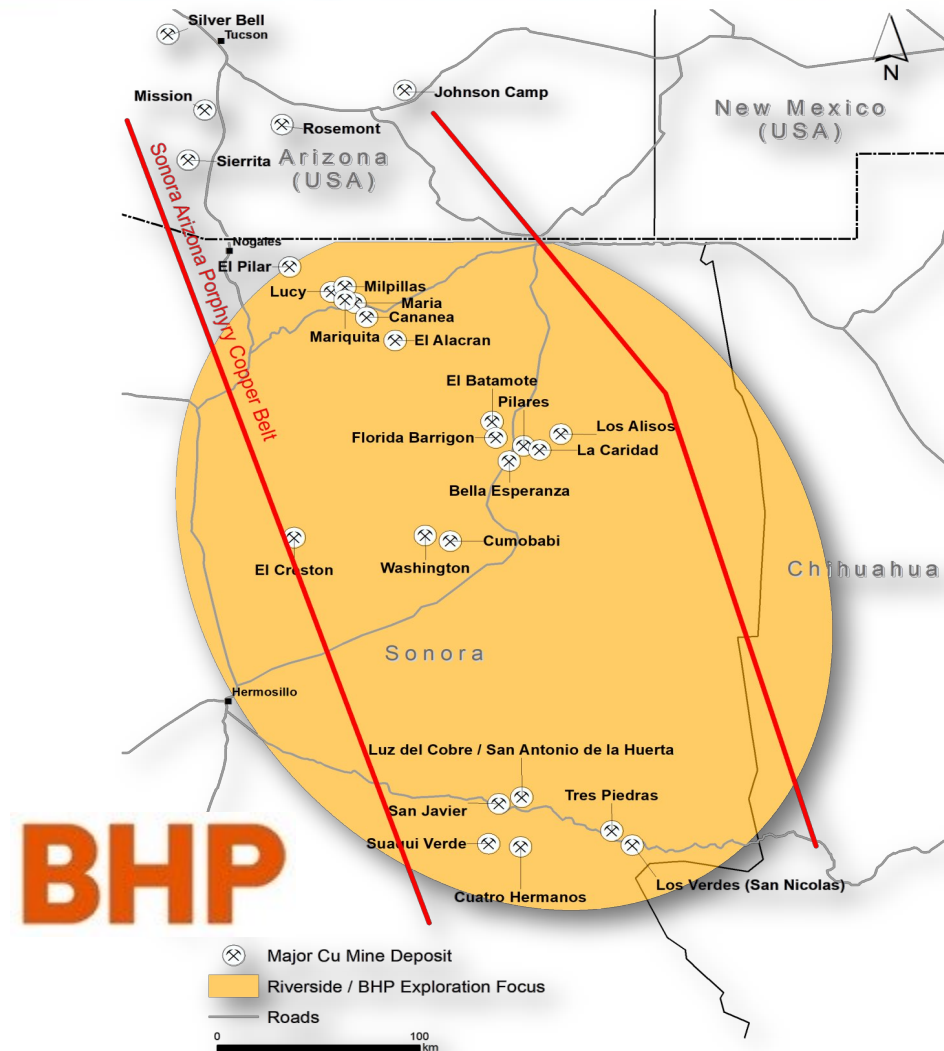
**HOCHSCHILD**



**RIVERSIDE**  
RESOURCES INC

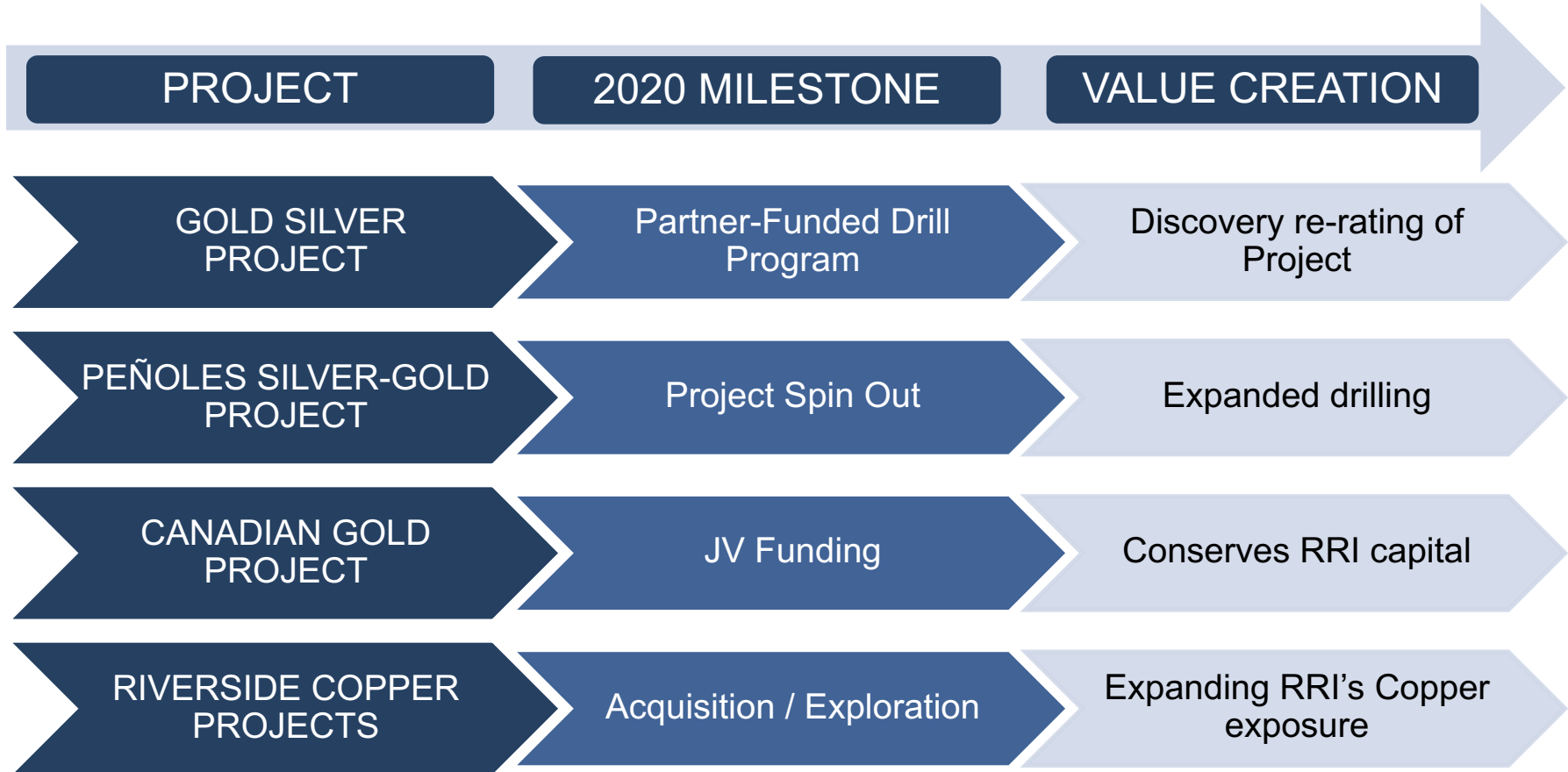
# Exploration Funding Agreement with BHP

- BHP to fund **US\$1M/year** for a minimum of **two-years** for copper generative work
- Focus on the central portion of the **Laramide Copper Belt** in Sonora, Mexico
- **Monthly management fees** plus 10% for all work
- Built in **success fee payments** to Riverside at each stage of development
- Three Stages
  1. Project Generation Phase (I)
  2. Project Operation Phase (II)
  3. Joint Venture Stage (III)



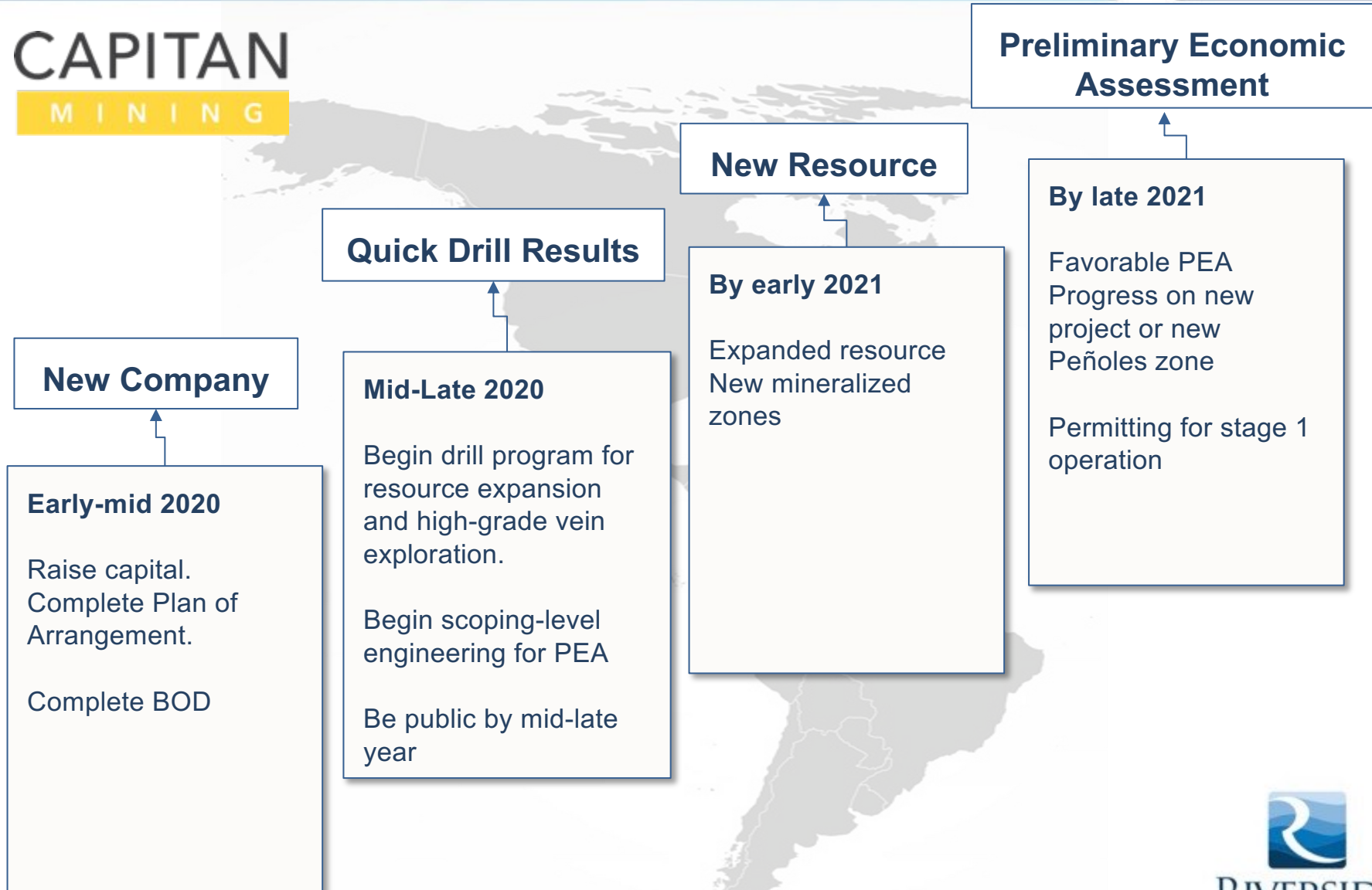
Region of Copper Belt of Mexico and Riverside-BHP Generative program

# Progressing the Portfolio

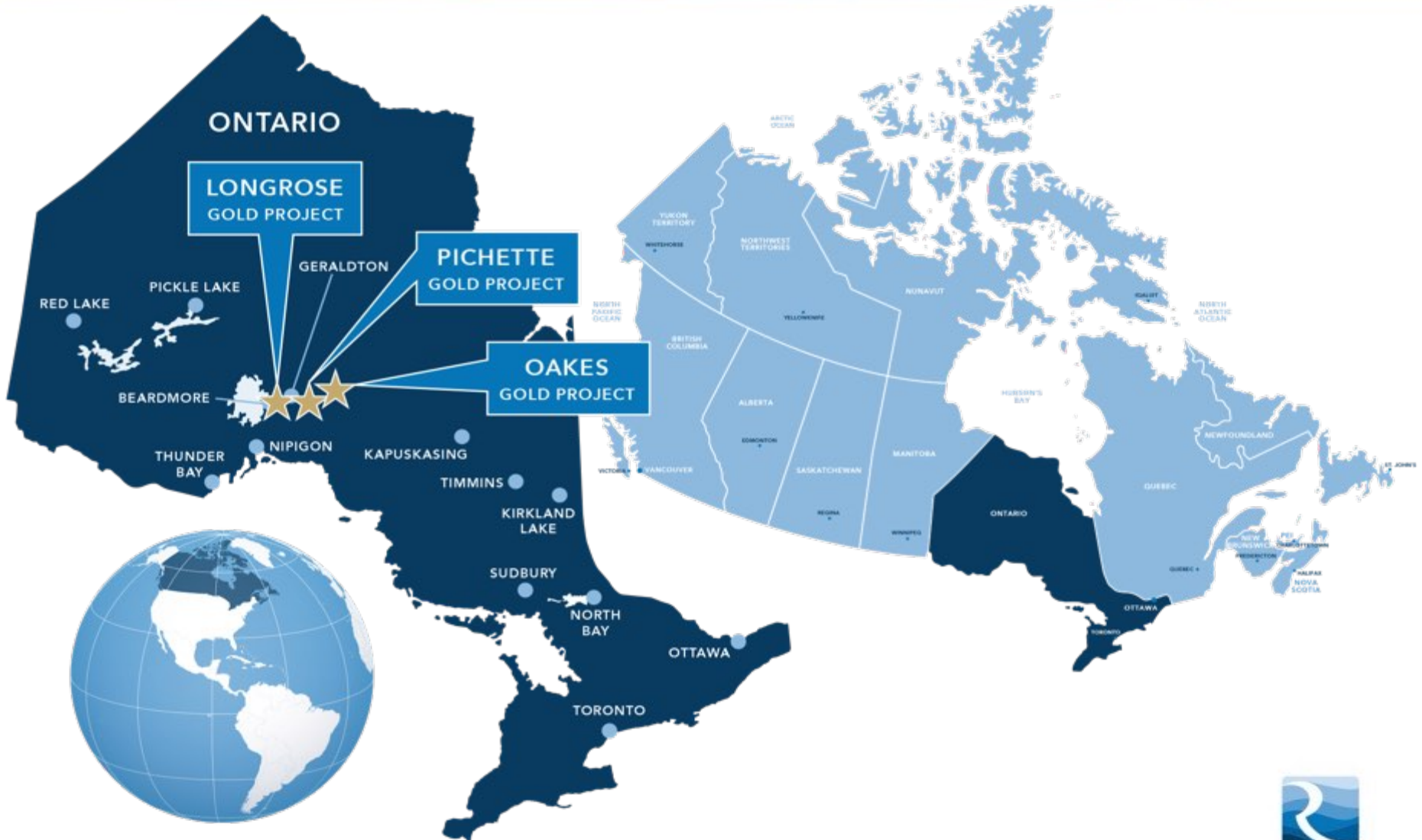




# Capitan Mining Plan (Peñoles Spin-Out Approved)



# Expanding into Canada

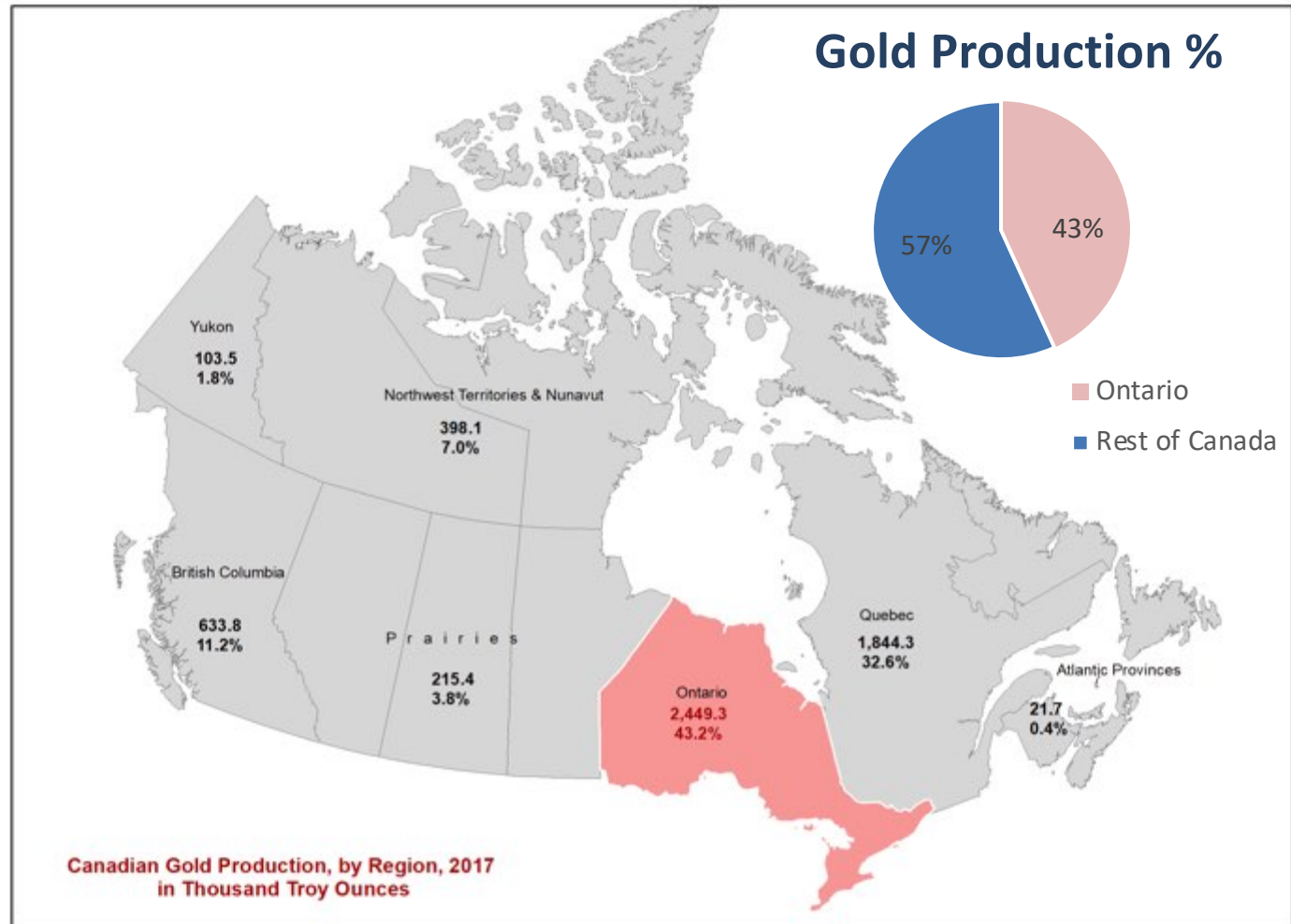


# Why Canada? Why Ontario?

Ontario is the **leading mining jurisdiction in Canada**

Ontario's mining belts are within mining friendly jurisdictions and host excellent infrastructure and **numerous producing mines**

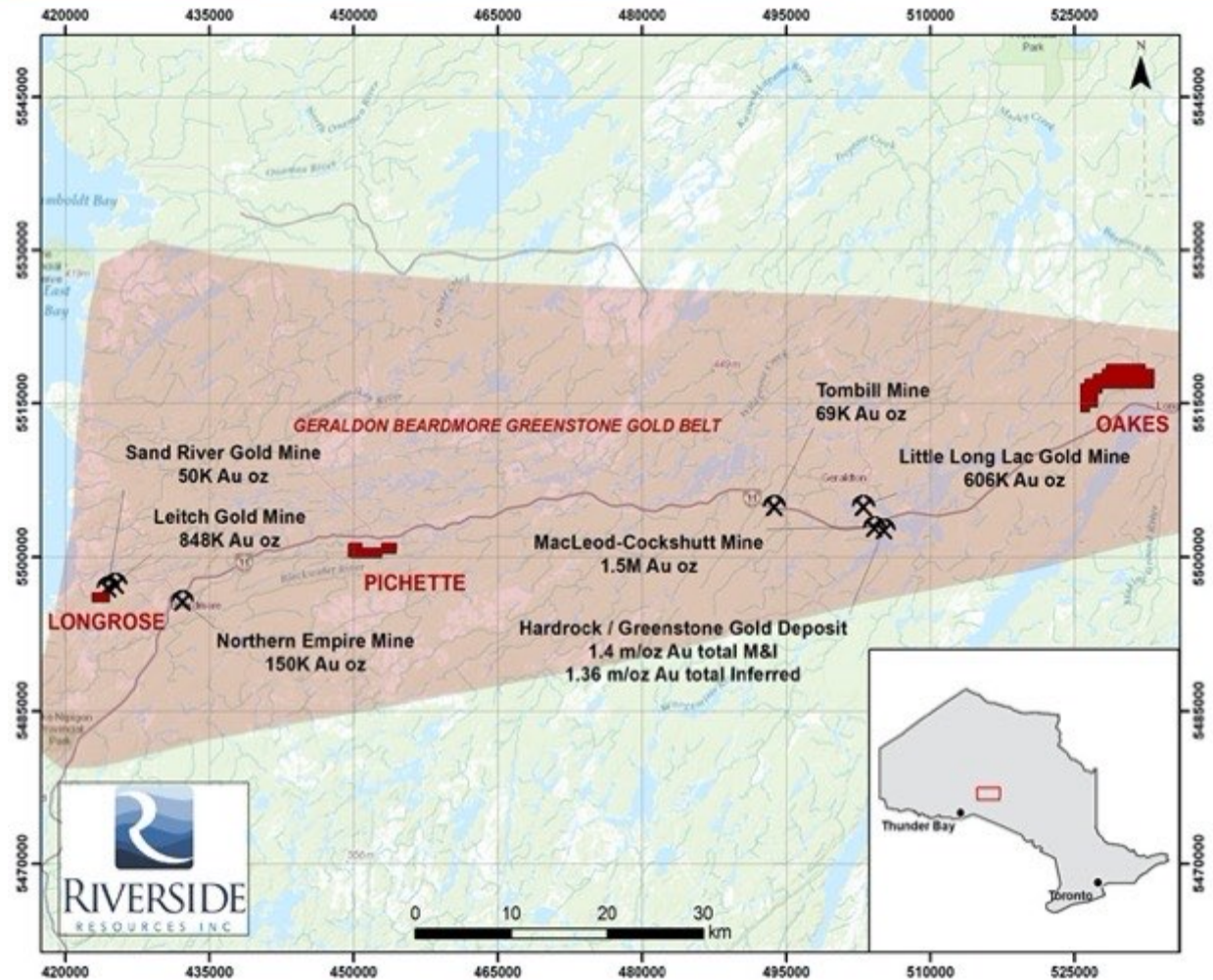
**Riverside's projects** are located Northeast of Thunder bay Ontario **within the Beardmore-Geraldton Greenstone Belt (BGGB)**





# Canadian Project Portfolio

- Located in **Ontario, Canada**
- Good access and close to necessary infrastructure
- Historical **high-grade gold** intercepts
- Riverside's 1st phase exploration program at Oakes found \*high-grade gold samples of **19.7 g/t Au** and **31.9 g/t Au**  
\*(see press release July 29, 2019)
- 2nd phase exploration at Oakes program found high-grade gold of up to **7 g/t Au**  
\*(see press release Dec 11, 2019)
- High-grade gold discovery potential
- Identifying and sampling targets for a proposed **drill program** at these Projects
- Available for option



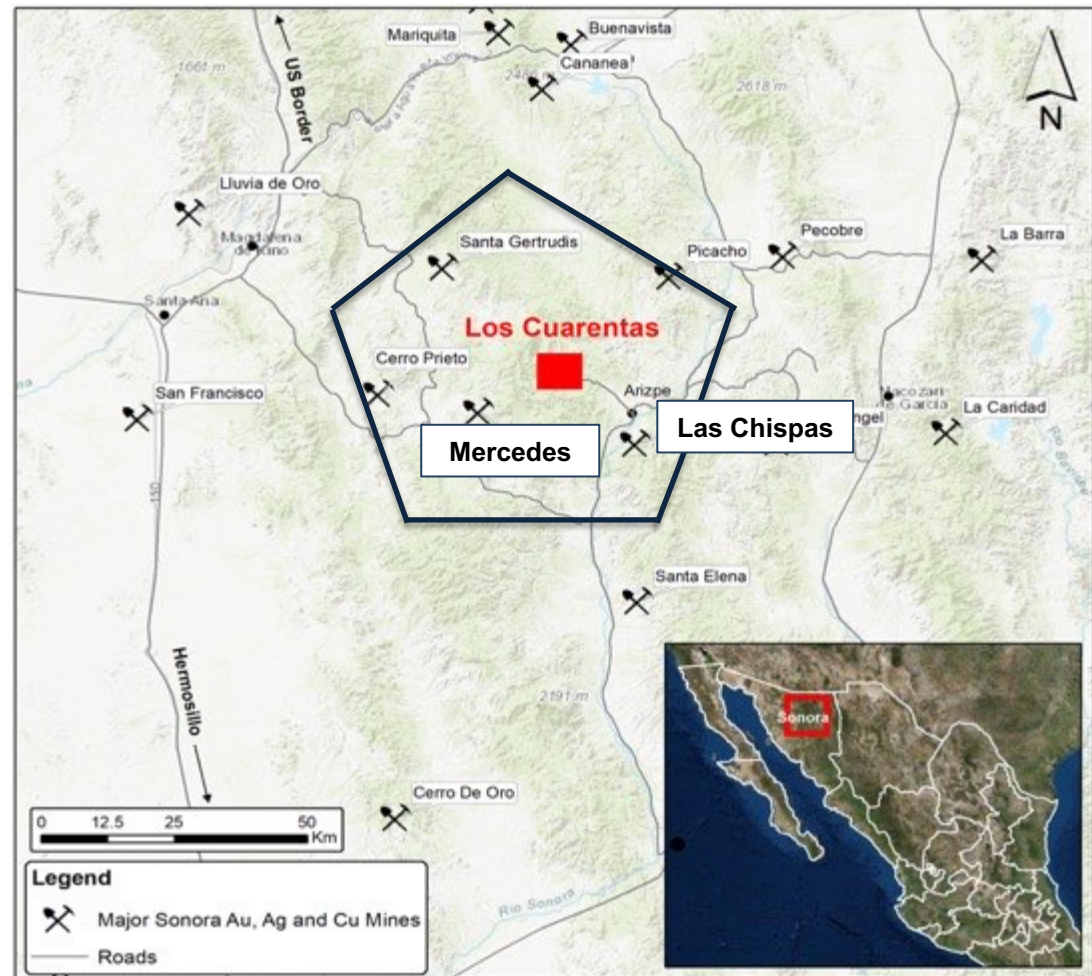
# Diverse High-Quality Mexico Portfolio





# Los Cuarentas Gold-Silver Project

- **100% Riverside owned**
- Located in NE Sonora, Mexico & **17 km NW of SilverCrest Metals' Las Chispas mine** with similar geology
- **High-grade**, low-sulphidation epithermal gold quartz vein system
- 2<sup>nd</sup> Sampling Program found **high-grade Au** (18 g/t & 12.3 g/t Au)  
*\*(see press release April 21, 2020)*
- **Drill permit approved**
- **Good access** and close to necessary infrastructure
- Identifying and sampling targets for a proposed drill program
- Available for option





# Cecilia Gold-Silver Project

- Located in NE Sonora, Mexico, 40 km east of Cananea (Mexico's largest copper city)
- **Good access** and close to necessary infrastructure
- **Near-surface gold mineralization** amenable to open-pit mining
- Riverside's 1st phase exploration found **\*high-grade gold and silver assays up to 113 g/t Au & 288 g/t Ag**  
*\*(see press release June 6, 2017)*
- **Drill permit approved** with drill targets identified
- Identifying and sampling targets for a proposed drill program
- Available for option



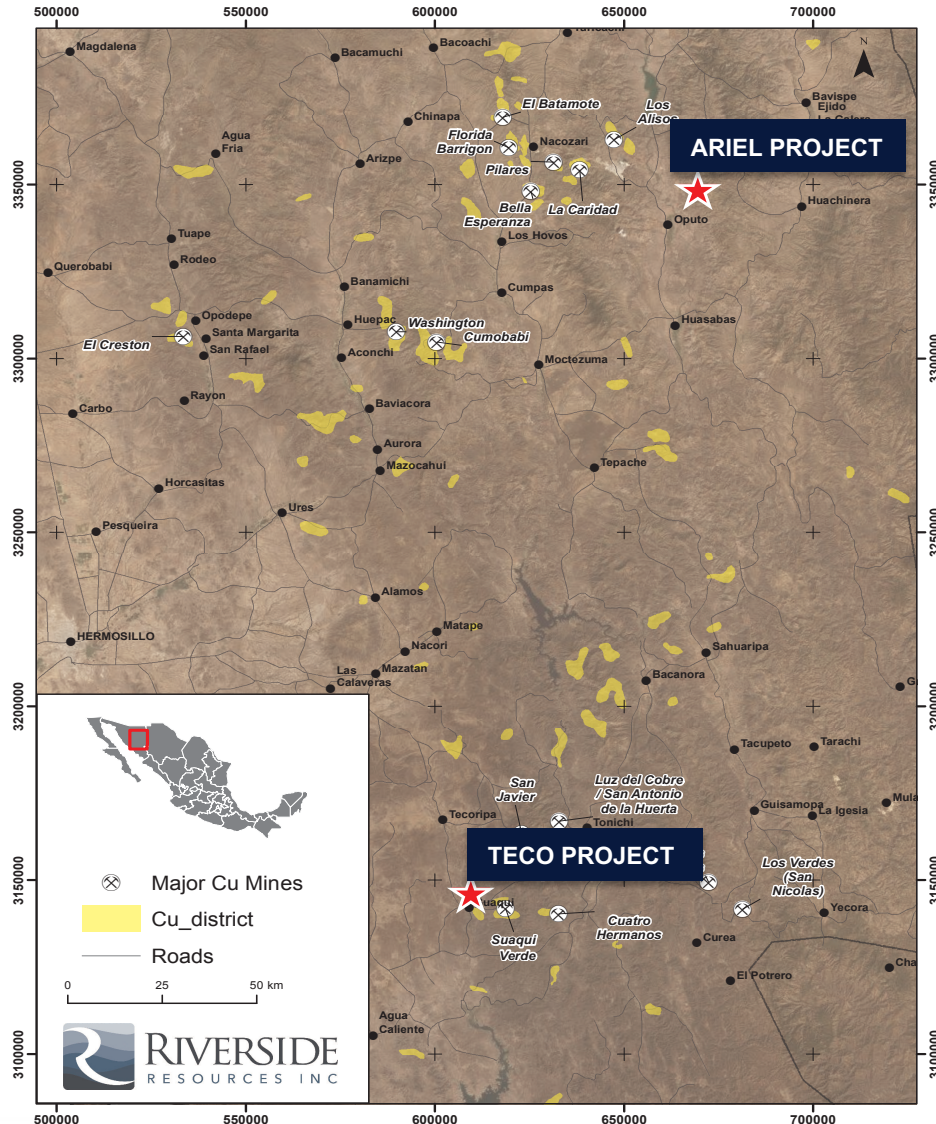


# Peñoles Gold-Silver Project

- **Spin-Out** of Capitan Mining **Approved**
- **\*500K Oz Au eq**  
NI 43-101 Resource
- **11,500 metres of drilling** and open
- All reported resources within 150 metres from surface
- **Open in multiple directions**, >5 district targets
- Initial Inferred **\*43-101 resource estimate:**
  - 305,000oz Au @ 0.46 g/t &
  - 15,150,000oz Ag @ 62.3 g/t



*\*The El Capitan gold and Jesus Maria silver Inferred Mineral Resource estimates were done by Robert Sim, P.Geo of SIM Geological Inc. Mr. Sim is an Independent Qualified Person as defined by National Instrument 43-101 Standards of Disclosure for Mineral Projects and is a co-author of the 43-101 Technical Report on the Peñoles Gold-Silver Project, Durango State, Mexico that was made public on January 12, 2020. "Inferred Mineral Resources" have a great amount of uncertainty as to their existence and economic viability.*



## Riverside has two Copper Assets

ARIEL

TECO

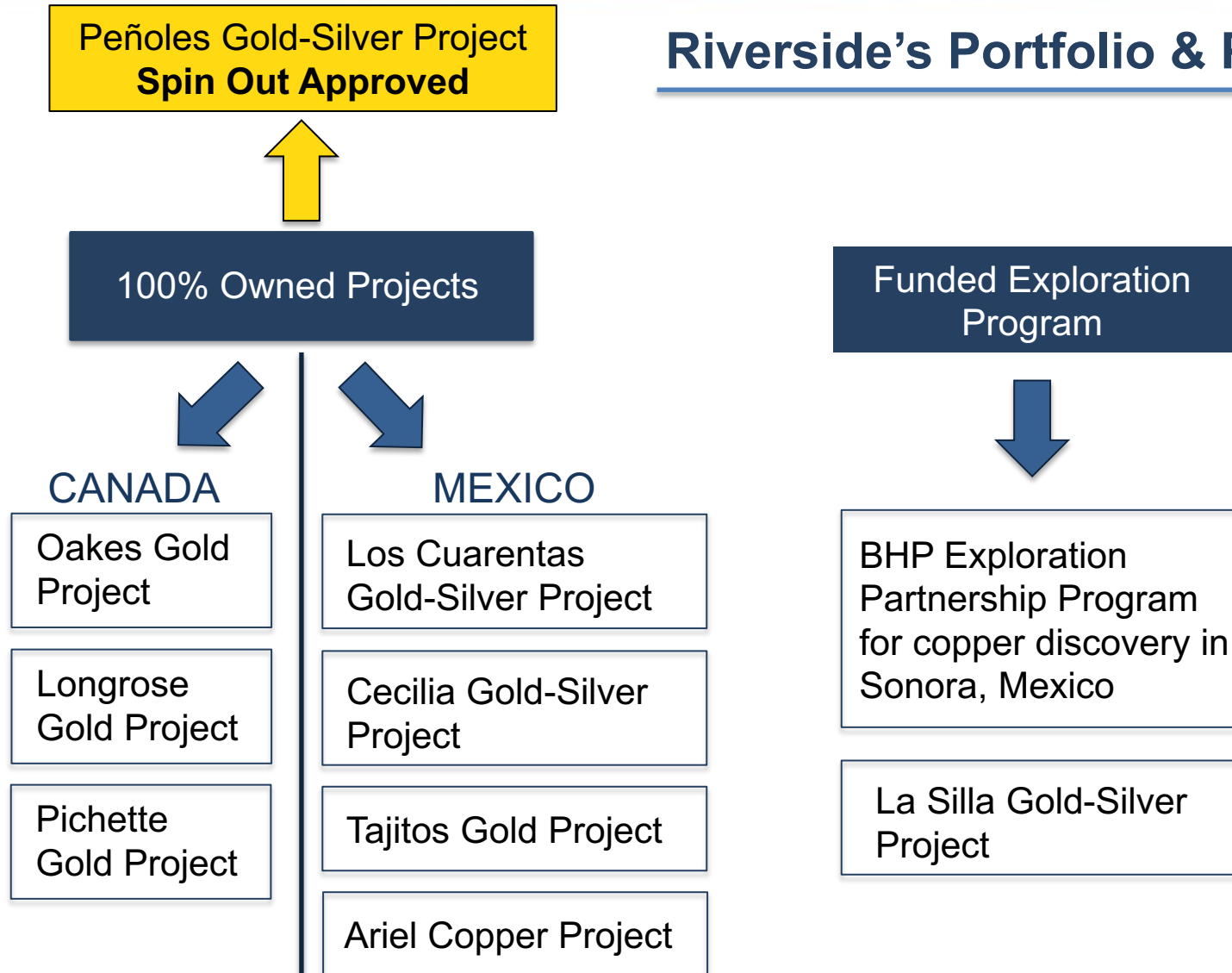
 Major Mexico Copper Mines





# Asset Value Drivers

## Riverside's Portfolio & Partnerships





- Riverside commences Exploration Funding Agreement with BHP
  - Lead generation → Copper Discovery
- Riverside expects to deliver partner-funded drill program at Oakes Gold Project
- Continued exploration at Riverside owned projects:
  - Cecilia Project: Targets identified & permitted for drilling
  - Los Cuarentas Project: Permitted for drilling
- New strategic partnerships to advance existing 100%-owned Riverside projects
- New project acquisitions and portfolio growth:
  - Mexico Expansion (Advancing the Los Cuarentas Project)
  - Canadian Acquisitions (Sampling programs and working up targets)

## Upcoming 2020 Catalysts & Value Drivers



- Riverside has more than \$2M in the treasury, no debt & a strong shareholder base with ~63M shares outstanding
- The Company has a strong portfolio of gold-silver and copper assets in stable jurisdictions and is actively adding new quality projects to the portfolio
- Partners consistently de-risking the portfolio and advancing projects towards discovery and resource development with valuation catalysts of new deals, exploration results and upcoming drill programs

## Summary & Key Takeaways





RIVERSIDE  
RESOURCES INC

KNOWLEDGE IS GOLDEN

Riverside Resources Inc.

Suite 550 – 800 West Pender Street  
Vancouver, BC, Canada V6C 2V6

+1 778.327.6671 x 312

[info@rivres.com](mailto:info@rivres.com)